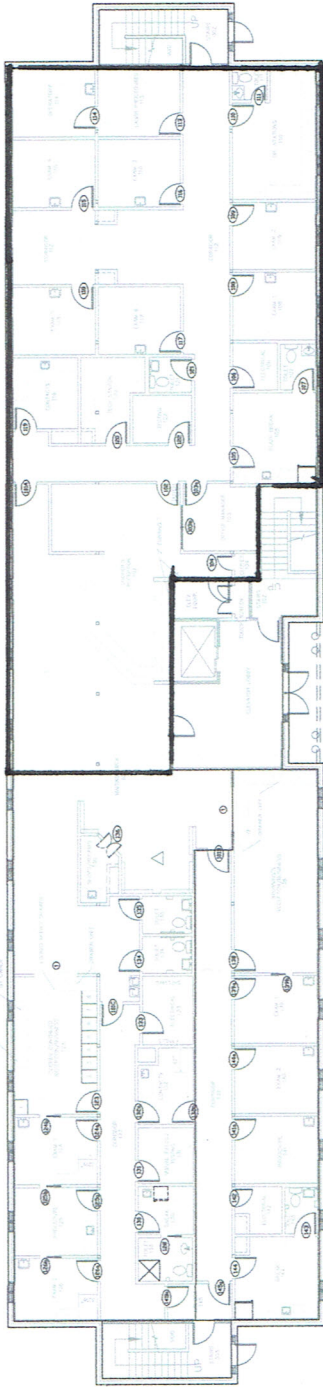
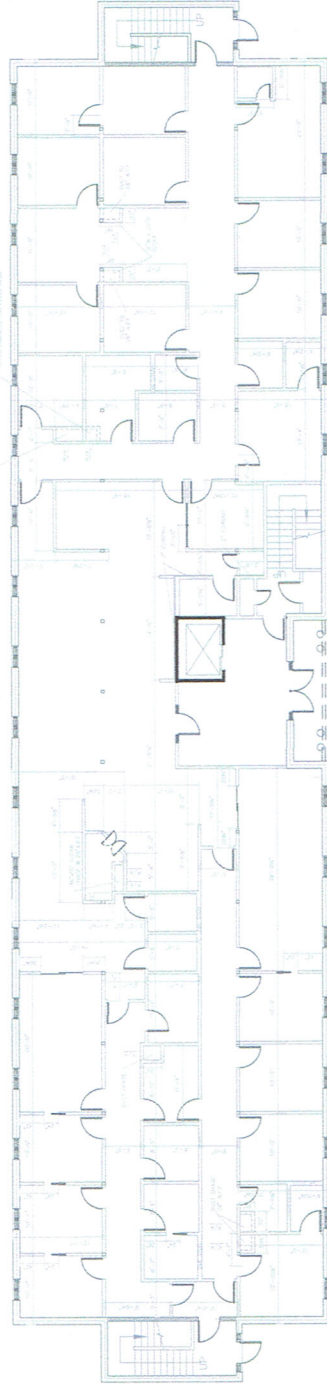


2139 VALLEYGATE DR, STE. 101C



A101 FIRST FLOOR PLAN

COOPER/STREIBER CORP. AREA - 1725 SQ. FT.
RESEARCH FACILITY AREA - 1114 SQ. FT.
STAFF OFFICE - 122 SQ. FT.
LABORATORY AREA - 431 SQ. FT.
TOTAL FIRST FLOOR AREA - 3292 SQ. FT.



A102 DIMENSIONED PLAN

NO. 101	DATE: 07/26/2003
NO. 102	DATE: 07/26/2003
NO. 103	DATE: 07/26/2003
NO. 104	DATE: 07/26/2003
NO. 105	DATE: 07/26/2003
NO. 106	DATE: 07/26/2003
NO. 107	DATE: 07/26/2003
NO. 108	DATE: 07/26/2003
NO. 109	DATE: 07/26/2003
NO. 110	DATE: 07/26/2003
NO. 111	DATE: 07/26/2003
NO. 112	DATE: 07/26/2003
NO. 113	DATE: 07/26/2003
NO. 114	DATE: 07/26/2003
NO. 115	DATE: 07/26/2003
NO. 116	DATE: 07/26/2003
NO. 117	DATE: 07/26/2003
NO. 118	DATE: 07/26/2003
NO. 119	DATE: 07/26/2003
NO. 120	DATE: 07/26/2003



DESIGNED TO BUILD ANDREW W. PAVETTE, AIA 04 ROBESON STREET, SUITE 200
FAVETTEVILLE, NORTH CAROLINA
ONE VILLAGE PLAZA
LOT #2 BUILDING #11
FAVETTEVILLE, NORTH CAROLINA

NO. 101
NO. 102
NO. 103
NO. 104
NO. 105
NO. 106
NO. 107
NO. 108
NO. 109
NO. 110
NO. 111
NO. 112
NO. 113
NO. 114
NO. 115
NO. 116
NO. 117
NO. 118
NO. 119
NO. 120

NO. 101
NO. 102
NO. 103
NO. 104
NO. 105
NO. 106
NO. 107
NO. 108
NO. 109
NO. 110
NO. 111
NO. 112
NO. 113
NO. 114
NO. 115
NO. 116
NO. 117
NO. 118
NO. 119
NO. 120

FAVETTEVILLE, NORTH CAROLINA 28503 (910) 483-8567 FAX (910) 484-8527 FAX